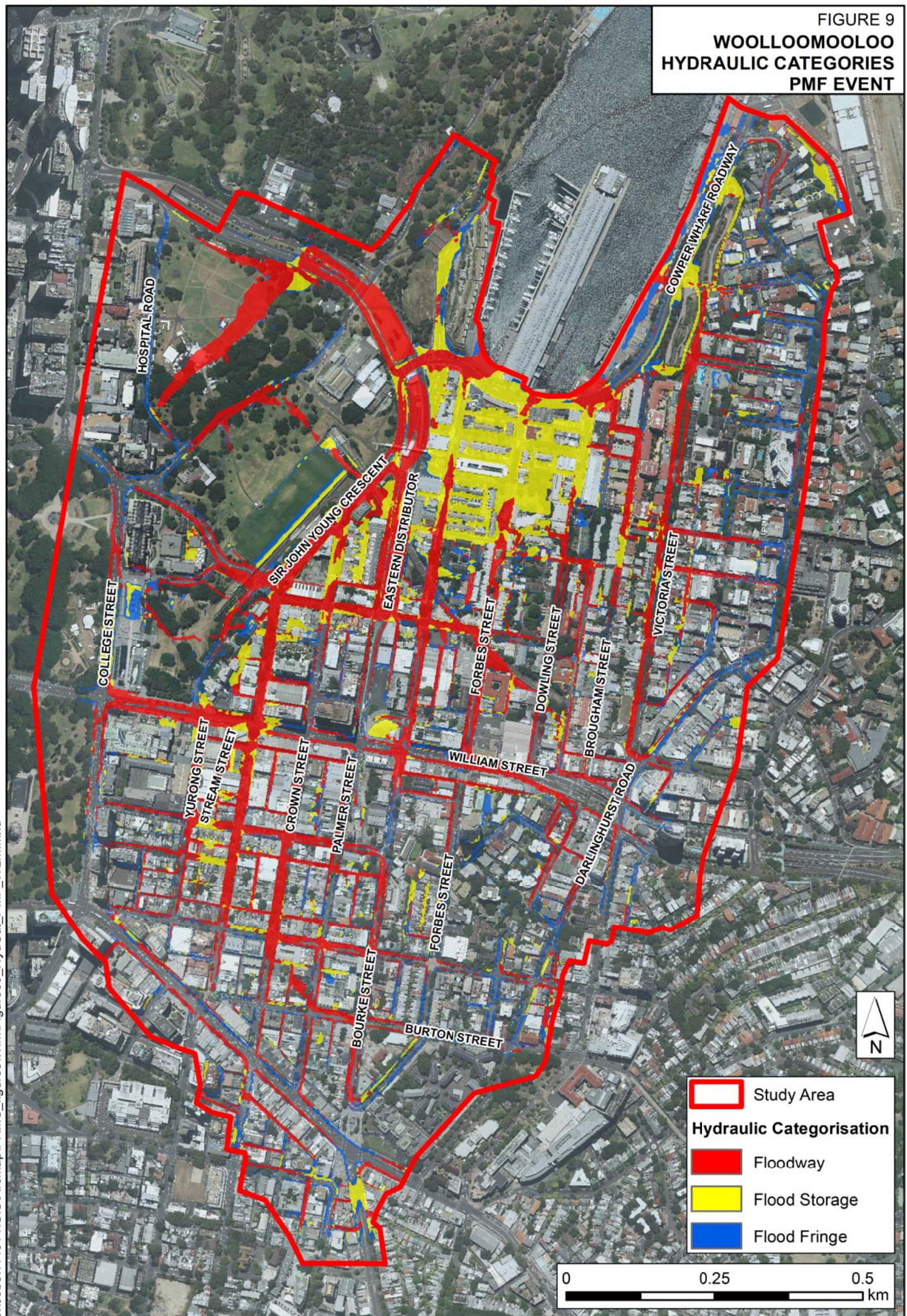


FIGURE 9
WOOLLOOMOOLOO
HYDRAULIC CATEGORIES
PMF EVENT



J:\Jobs\114014\GIS\ArcMap\FRMS_figures\Wilm\Figure09_HydCat_PMF_WLM.mxd

- Study Area
- Hydraulic Categorisation**
- Floodway
- Flood Storage
- Flood Fringe

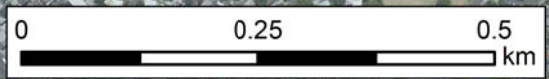


FIGURE 10
WOOLLOOMOOLOO
HAZARD CATEGORIES
0.5 EY EVENT

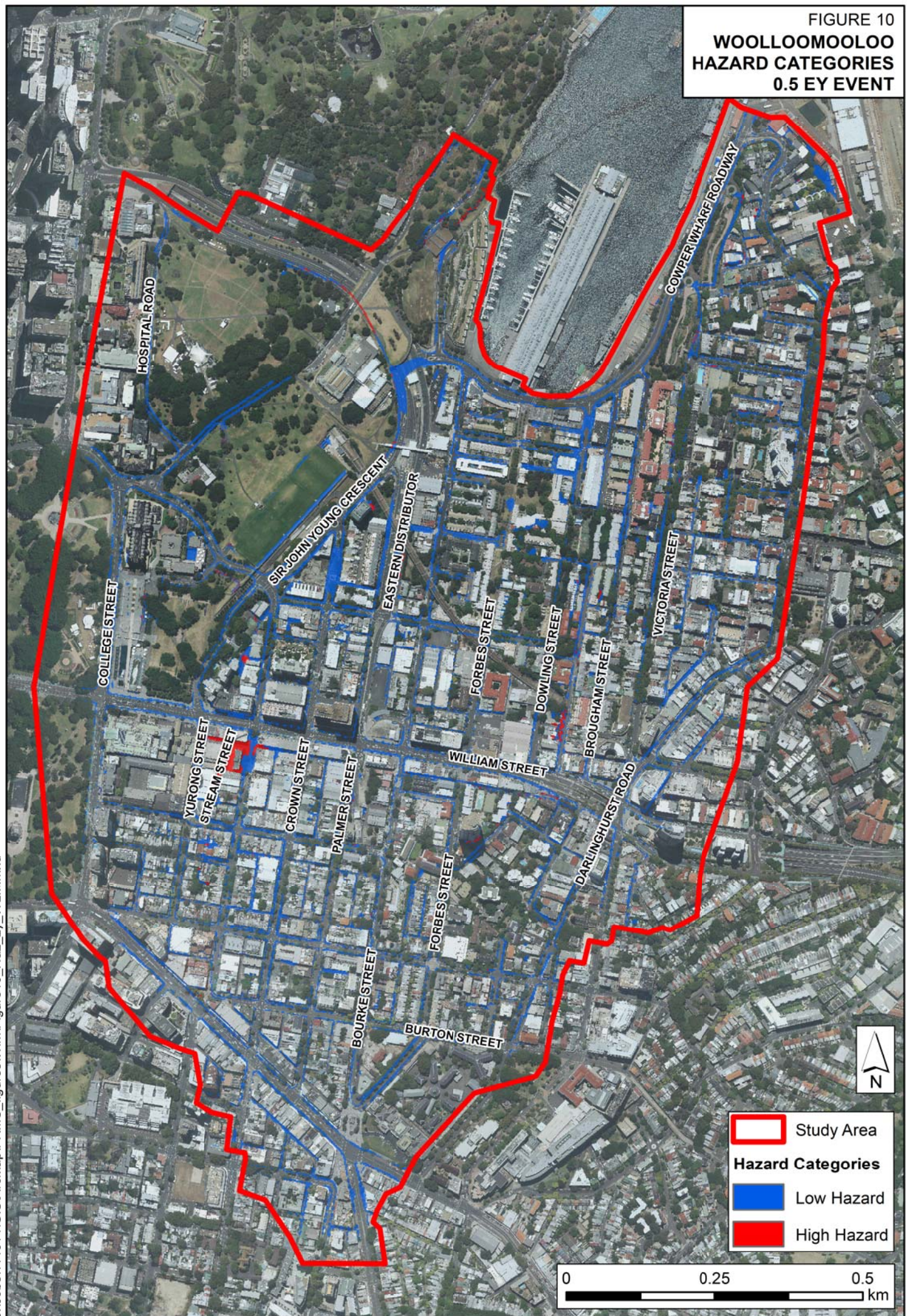
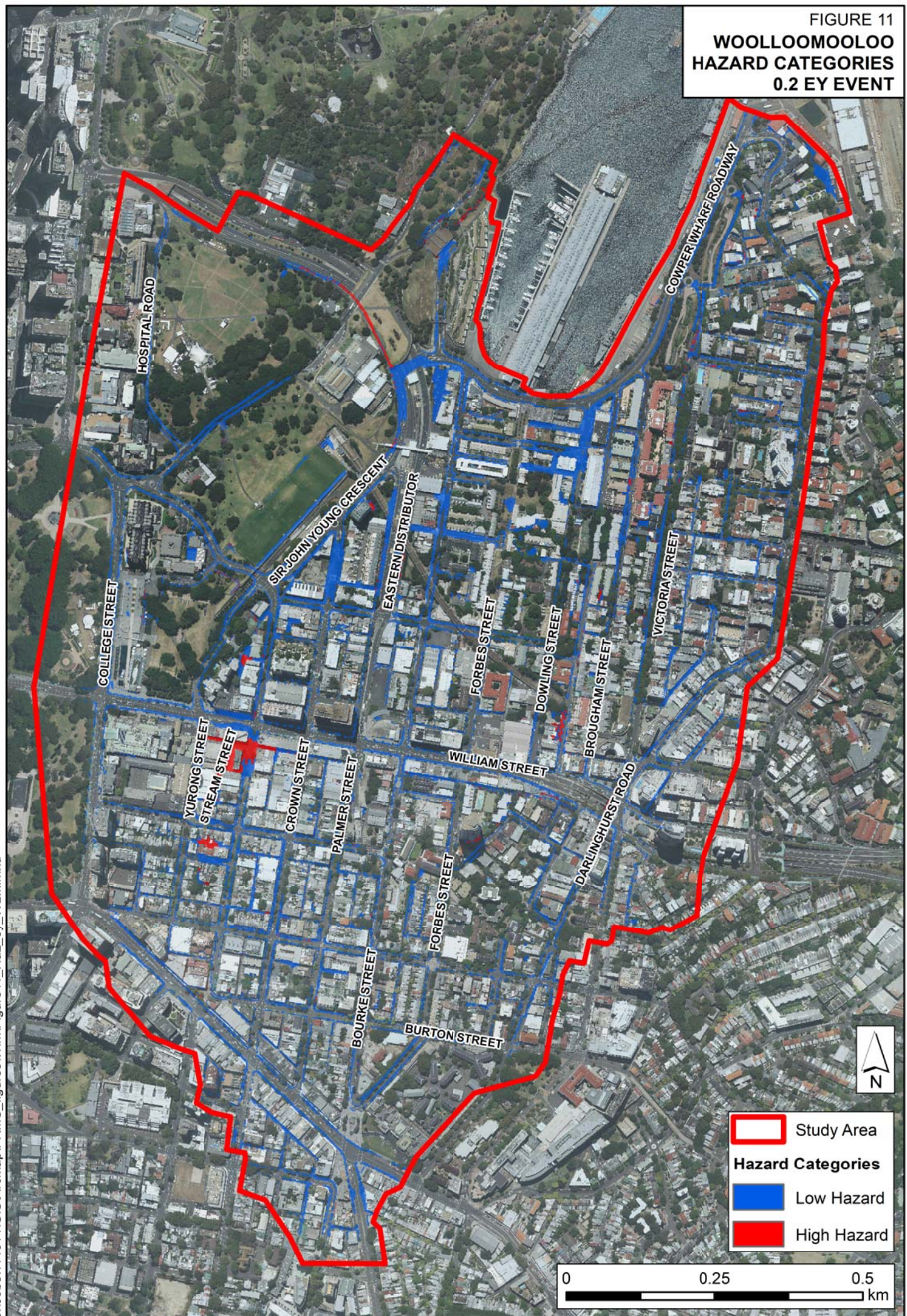


FIGURE 11
**WOOLLOOMOOLOO
 HAZARD CATEGORIES
 0.2 EY EVENT**



J:\Jobs\114014\GIS\ArcMap\FRMS_figures\Wilm\Figure11_Haz_5y_WLM.mxd

- Study Area
- Hazard Categories**
- Low Hazard
- High Hazard

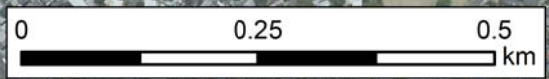


FIGURE 12
WOOLLOOMOOLOO
HAZARD CATEGORIES
10% AEP EVENT

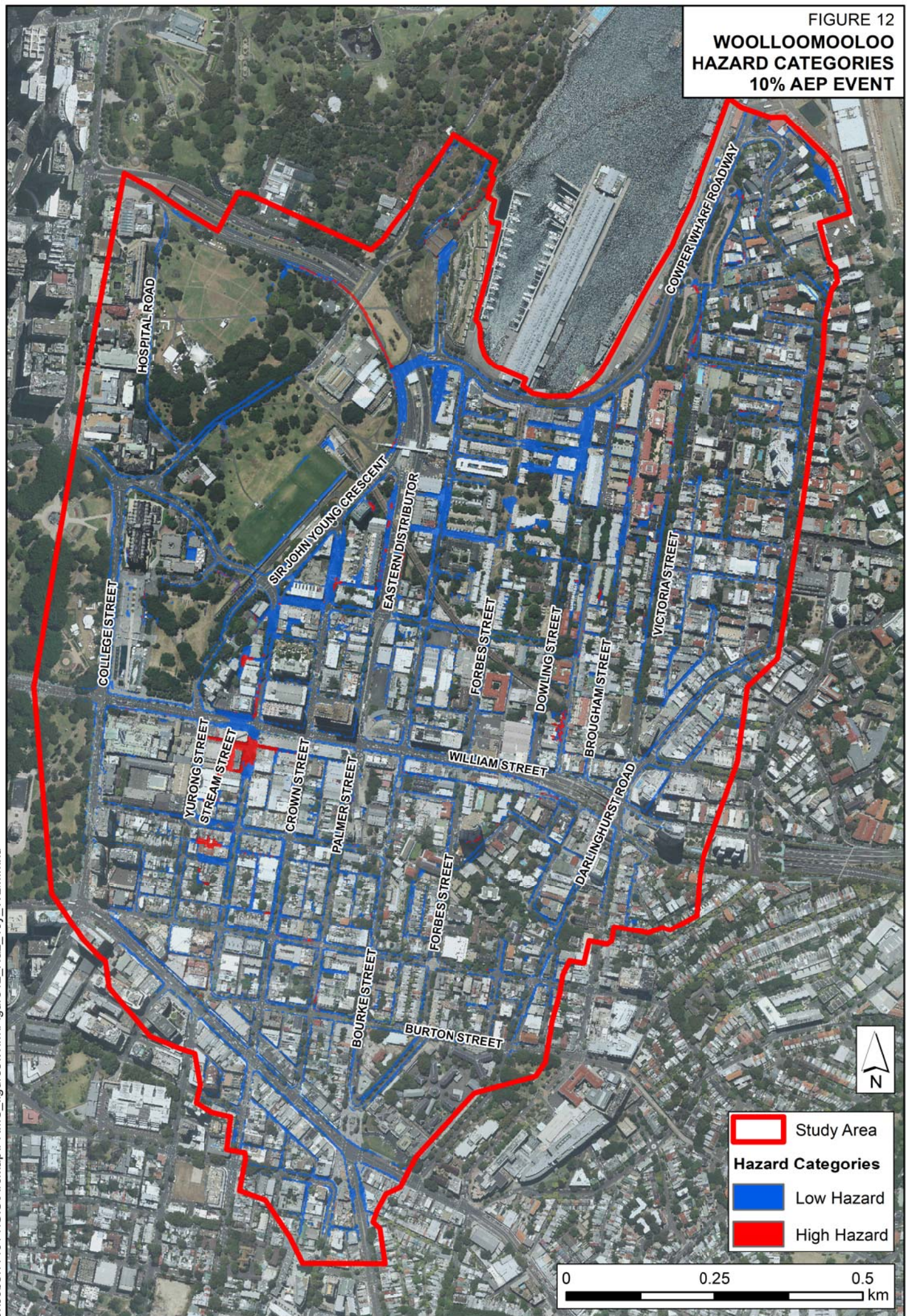


FIGURE 13
**WOOLLOOMOOLOO
 HAZARD CATEGORIES
 5% AEP EVENT**

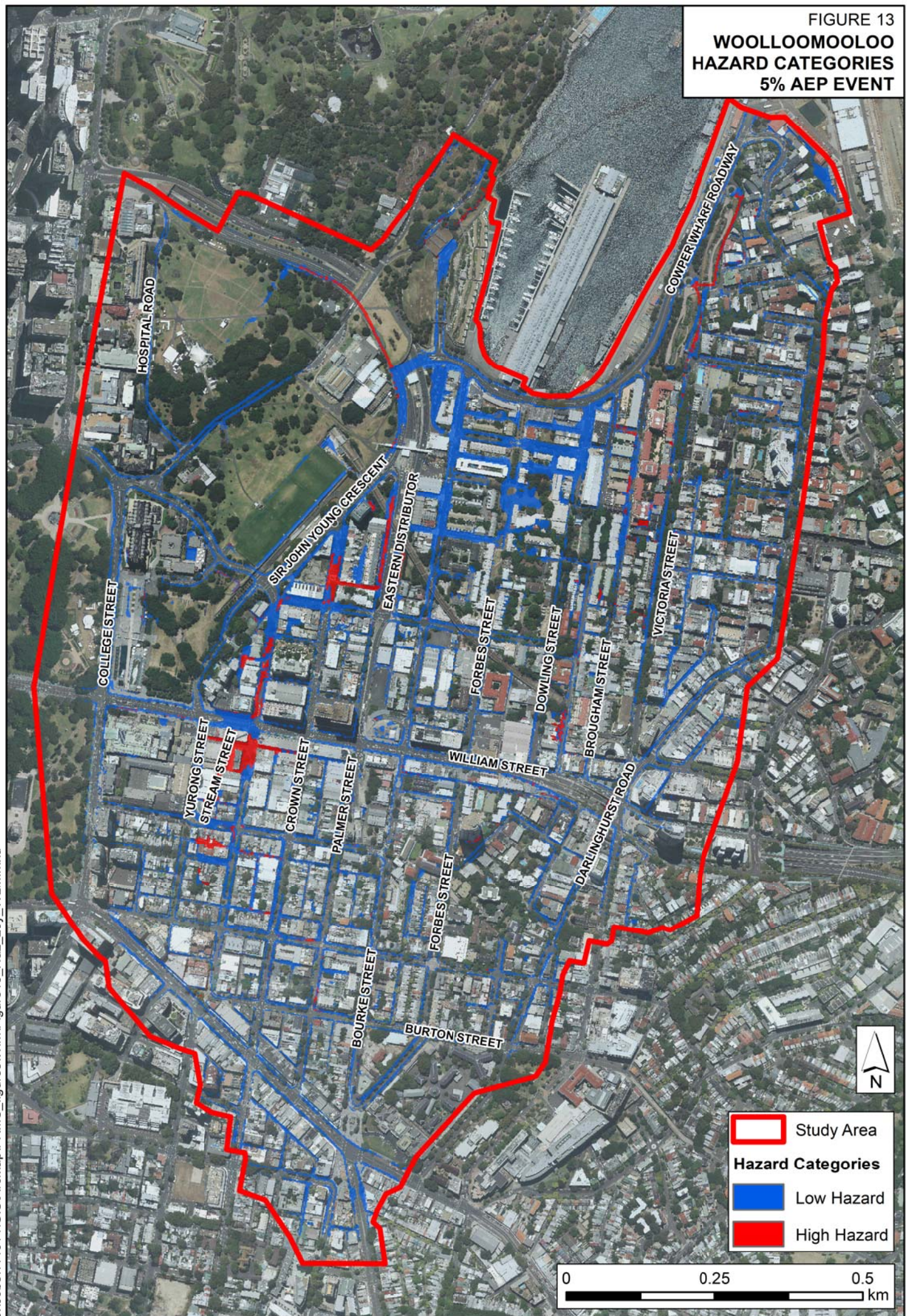
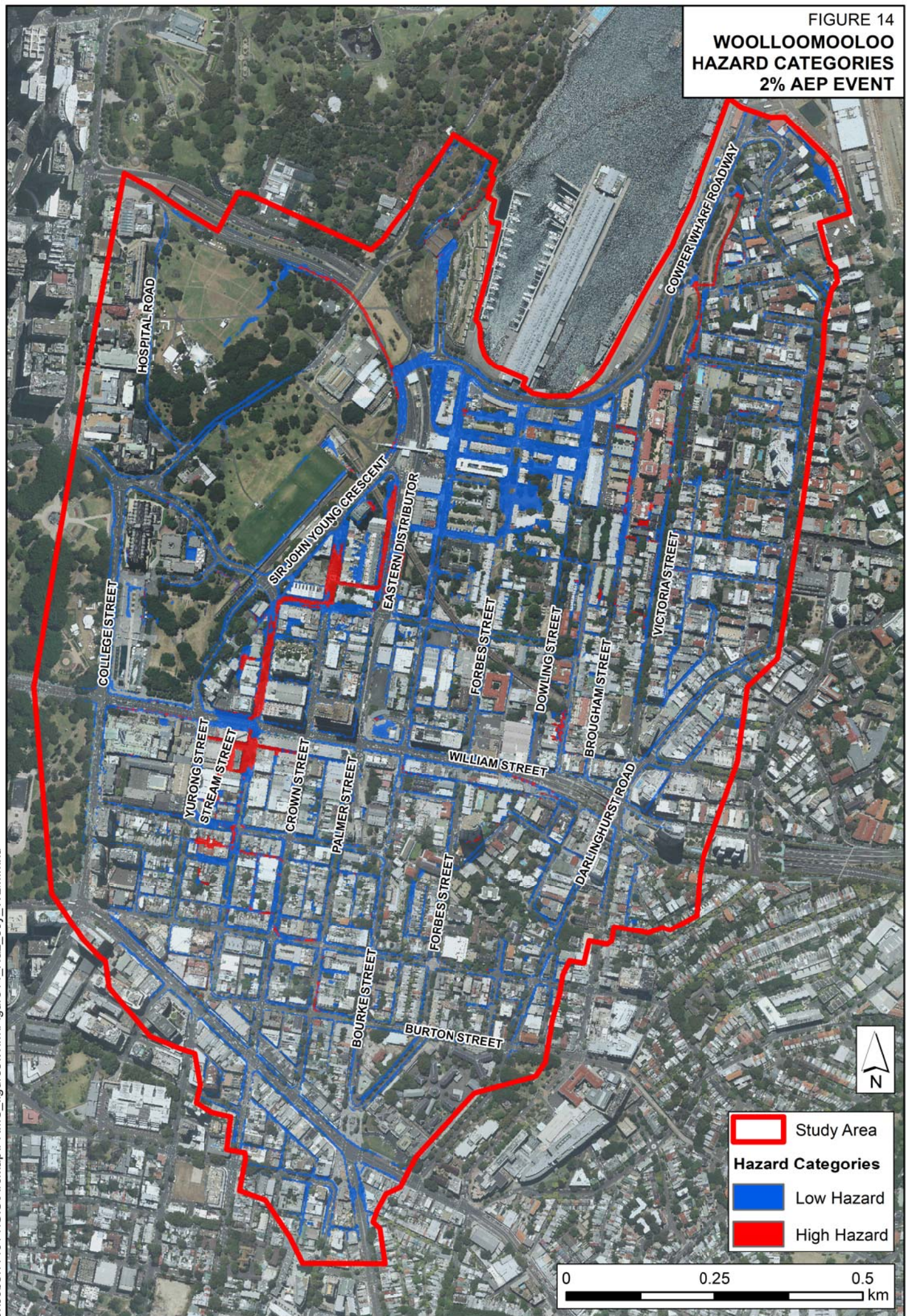



FIGURE 14
WOOLLOOMOOLOO
HAZARD CATEGORIES
2% AEP EVENT



	Study Area
Hazard Categories	
	Low Hazard
	High Hazard

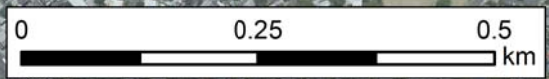
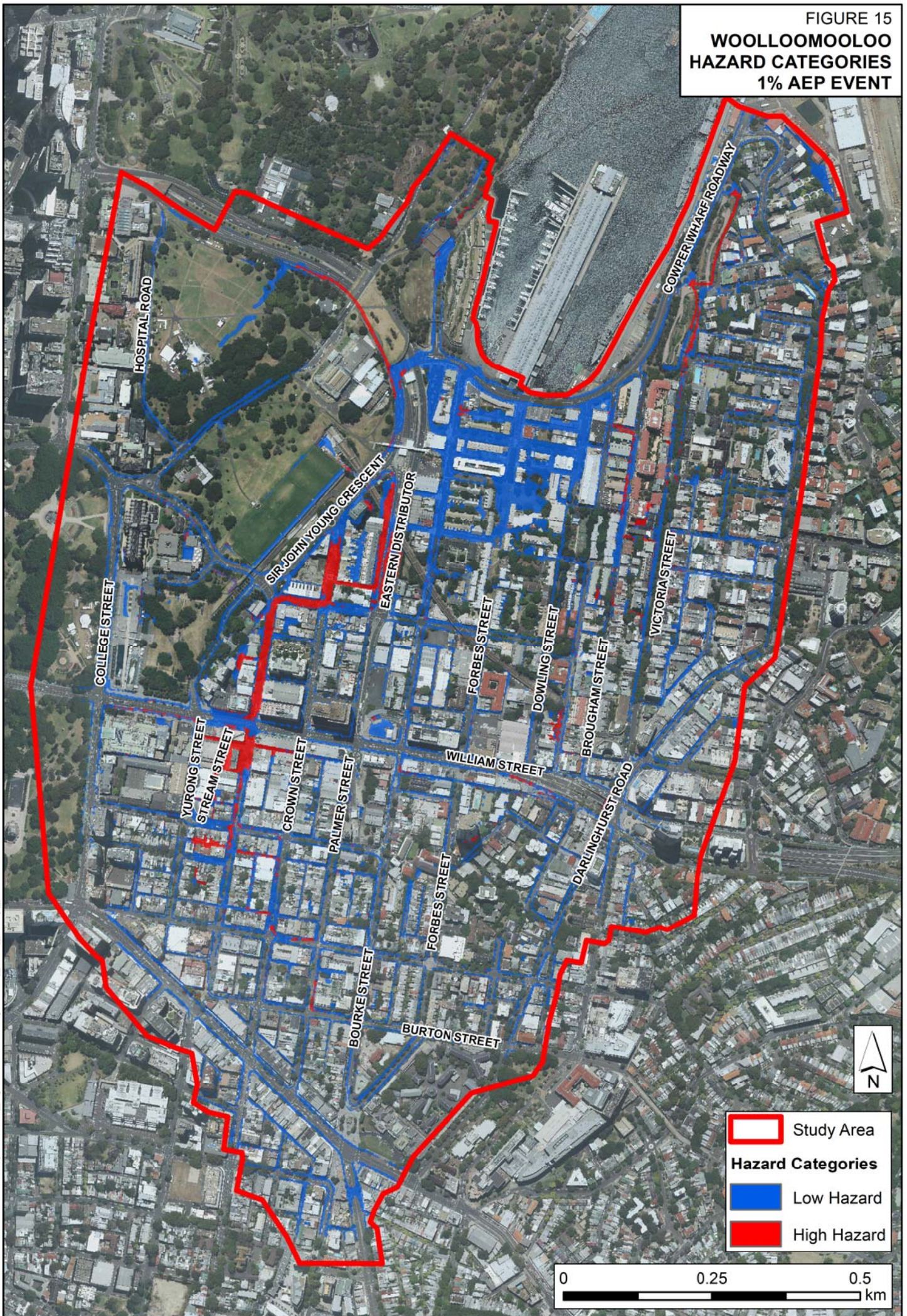


FIGURE 15
WOOLLOOMOOLOO
HAZARD CATEGORIES
1% AEP EVENT



J:\Jobs\114014\GIS\ArcMap\FRMS_figures\Wim\Figure15_Haz_100y_WLM.mxd

	Study Area
Hazard Categories	
	Low Hazard
	High Hazard

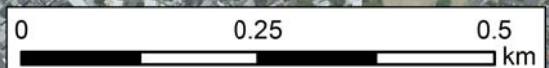
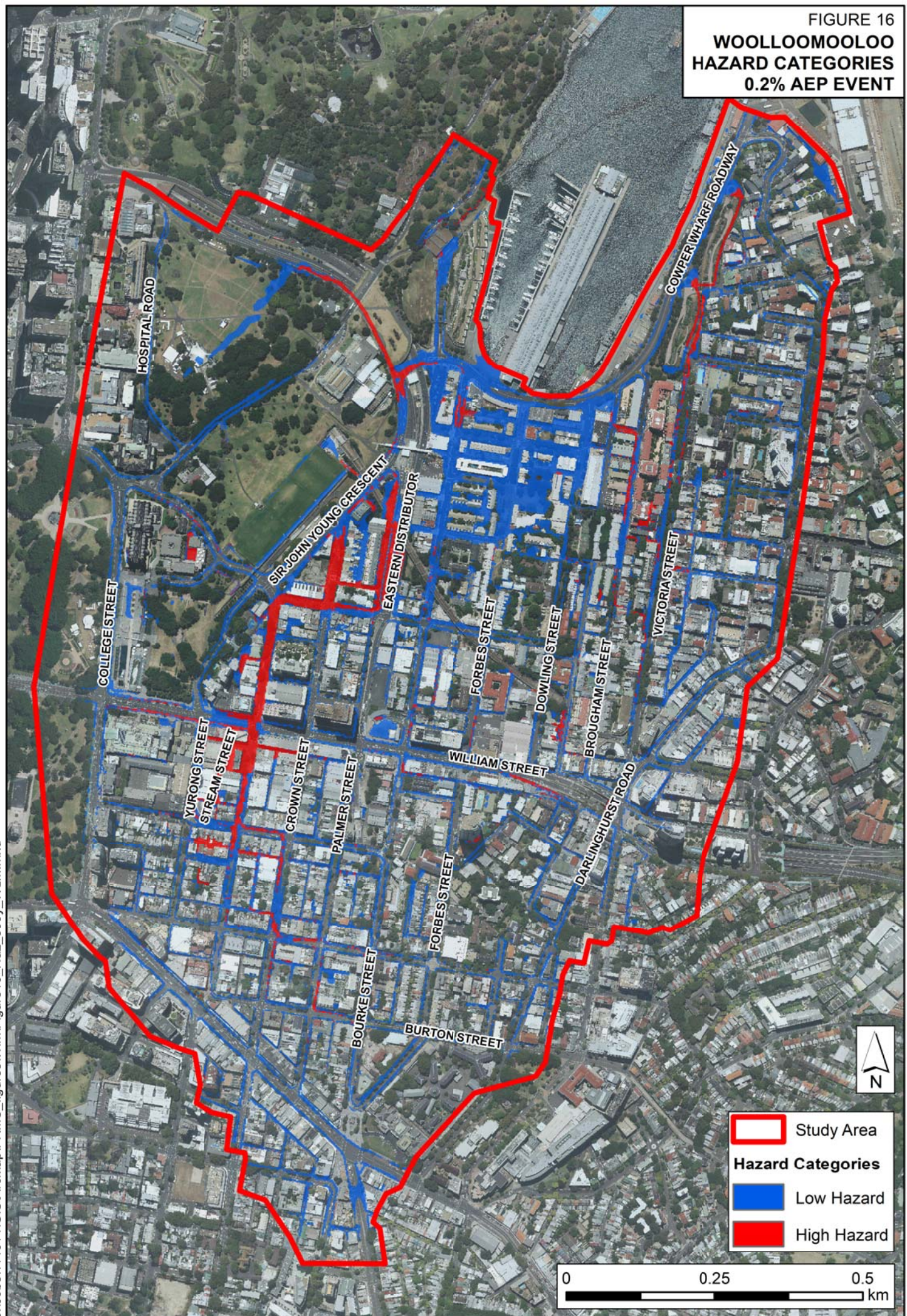



FIGURE 16
WOOLLOOMOOLOO
HAZARD CATEGORIES
0.2% AEP EVENT



	Study Area
Hazard Categories	
	Low Hazard
	High Hazard

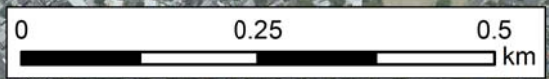


FIGURE 17
**WOOLLOOMOOLOO
 HAZARD CATEGORIES
 PMF EVENT**

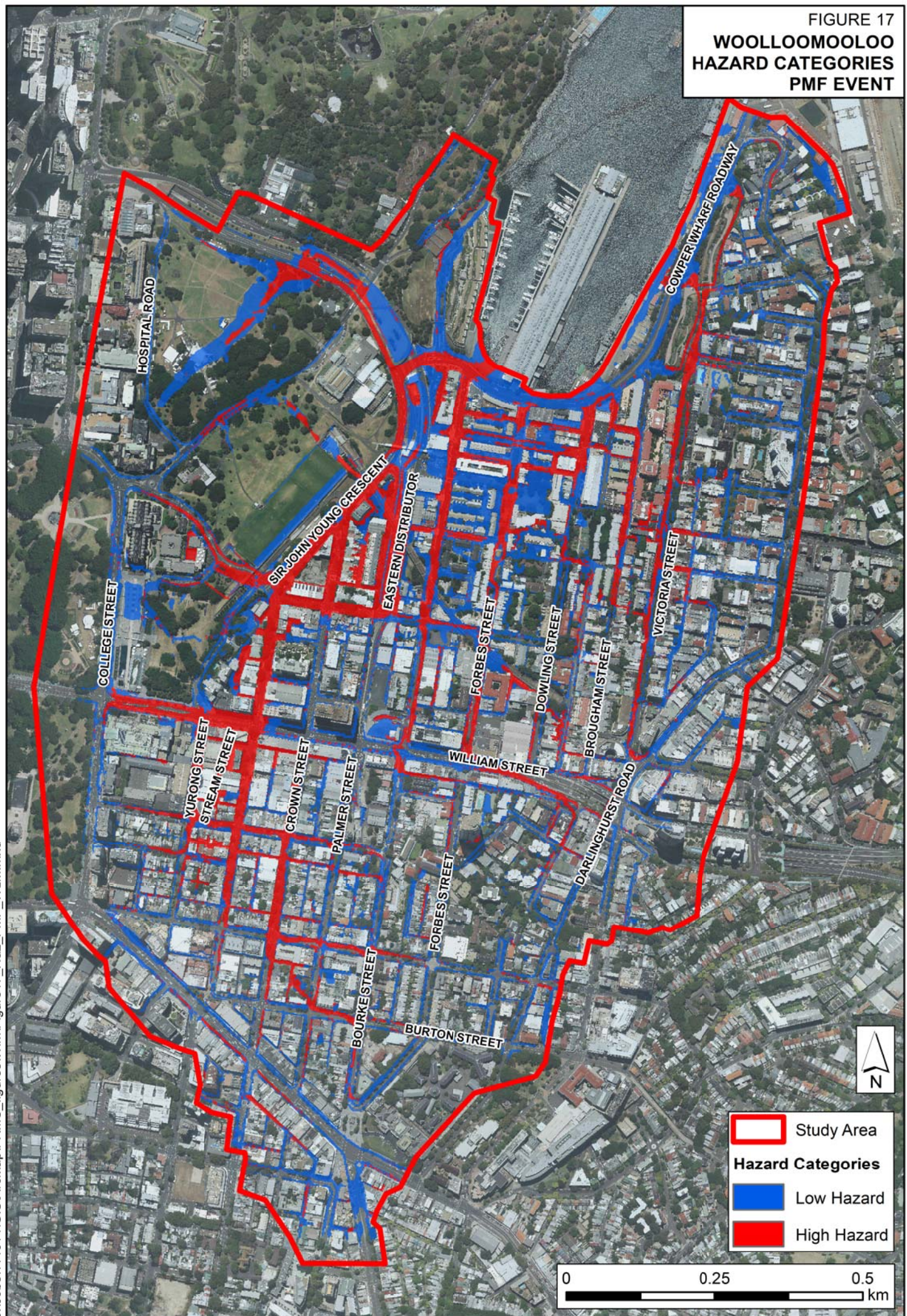
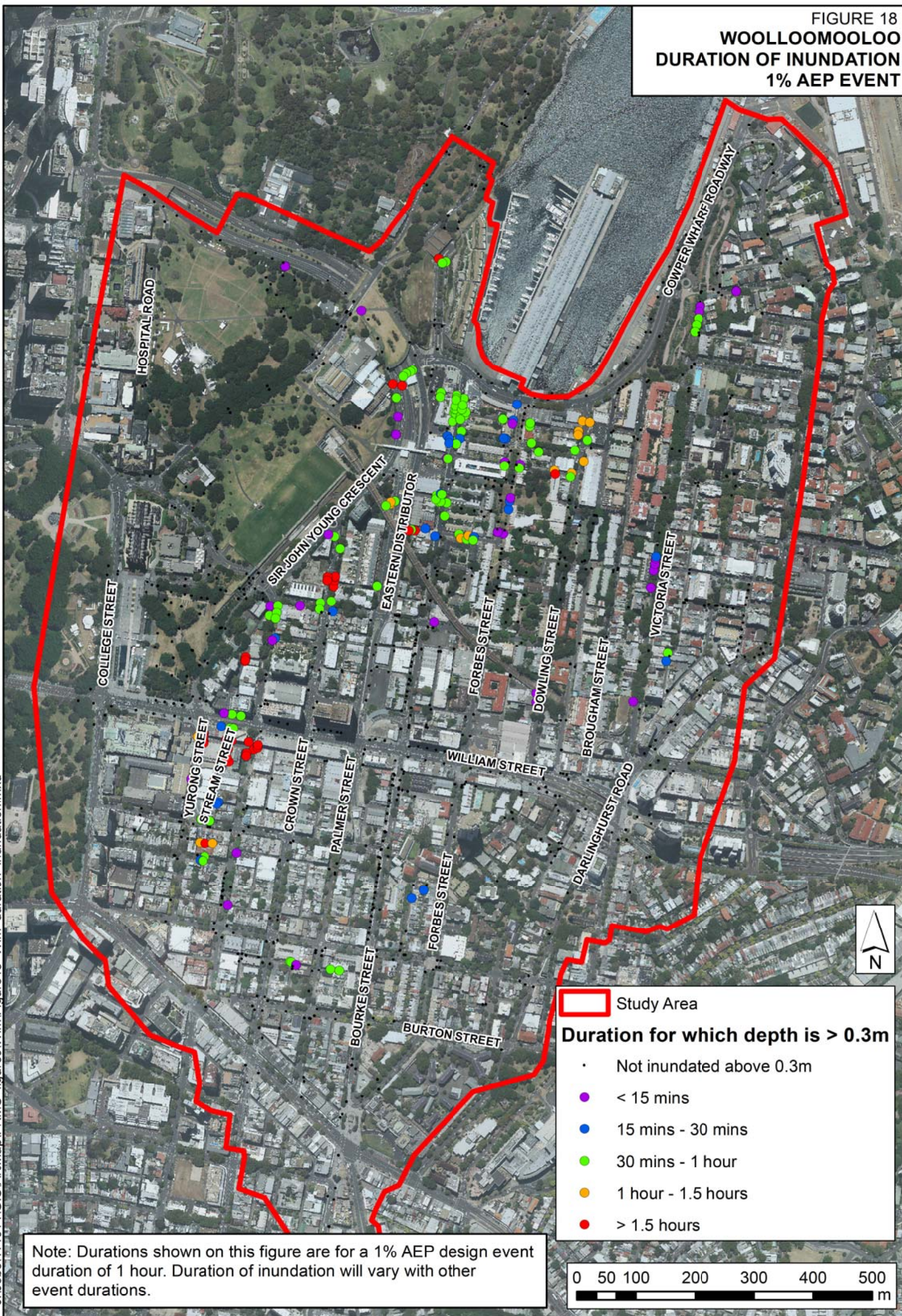


FIGURE 18
WOOLLOOMOOLOO
DURATION OF INUNDATION
1% AEP EVENT



Study Area

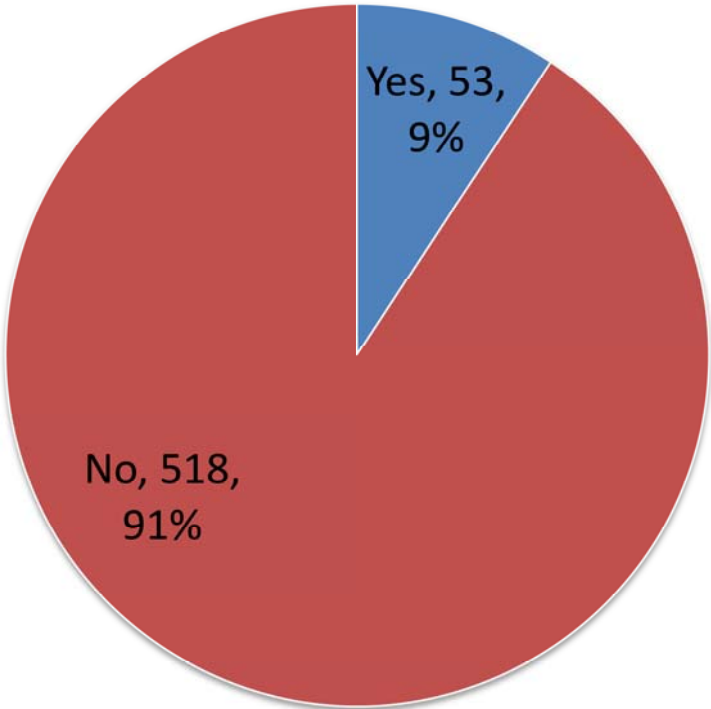
Duration for which depth is > 0.3m

- Not inundated above 0.3m
- < 15 mins
- 15 mins - 30 mins
- 30 mins - 1 hour
- 1 hour - 1.5 hours
- > 1.5 hours

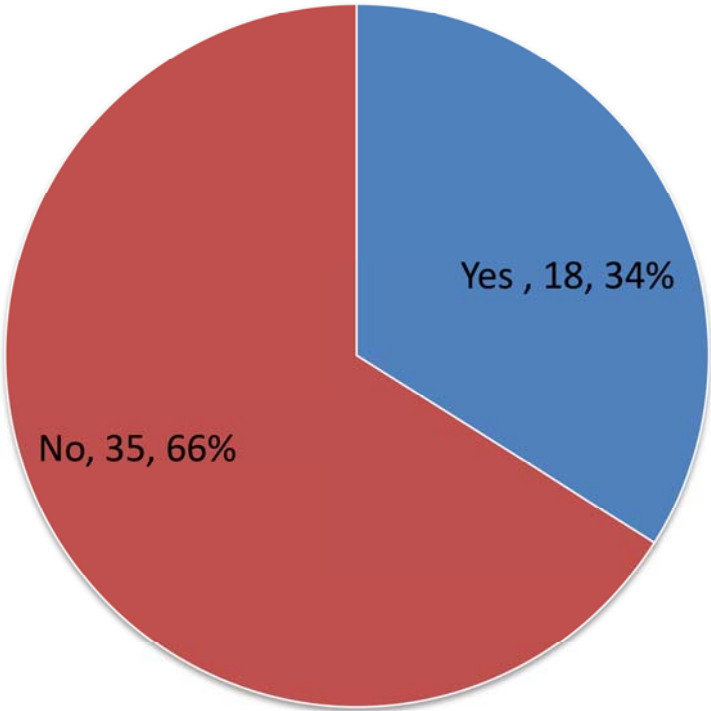


Note: Durations shown on this figure are for a 1% AEP design event duration of 1 hour. Duration of inundation will vary with other event durations.

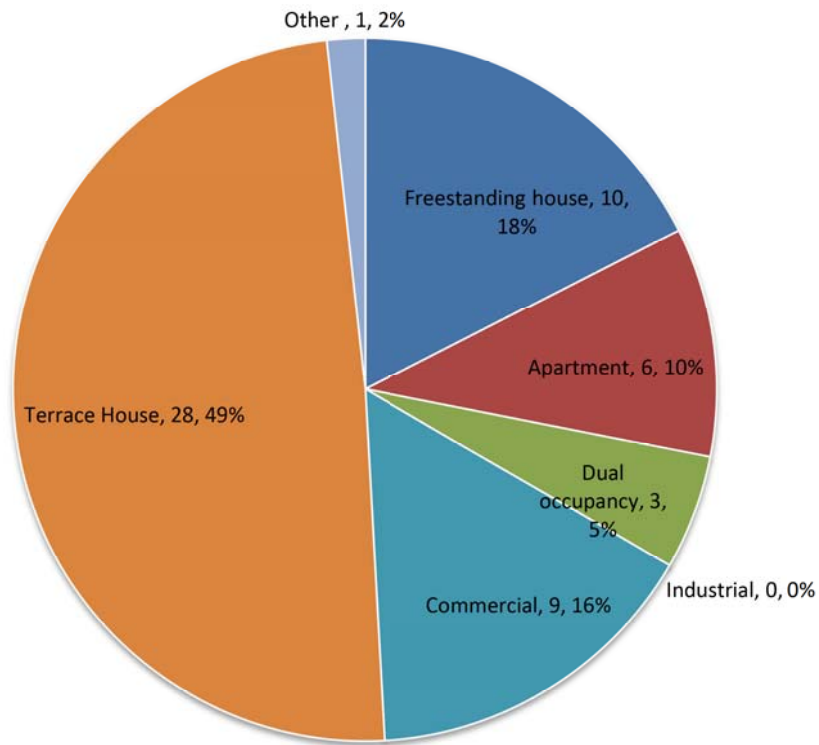
A: Number of Respondants



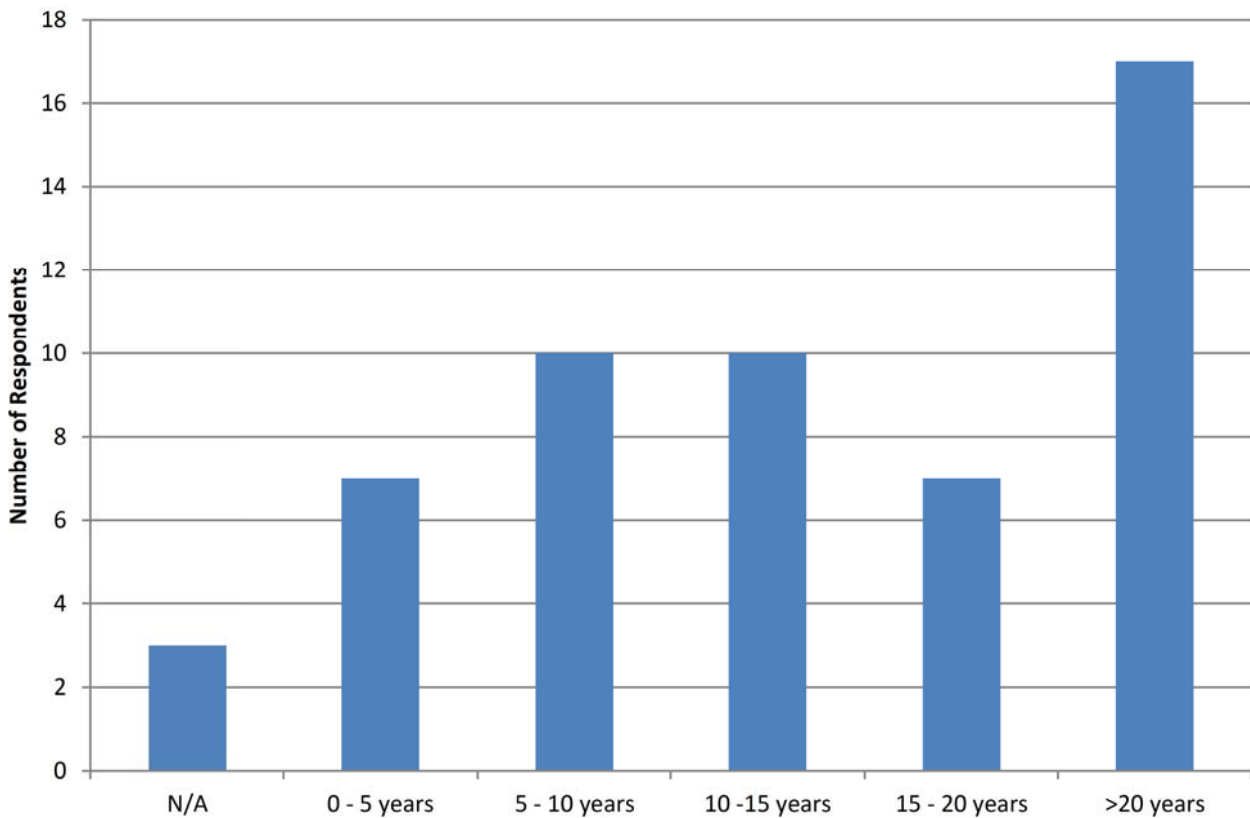
B: Experienced Flooding



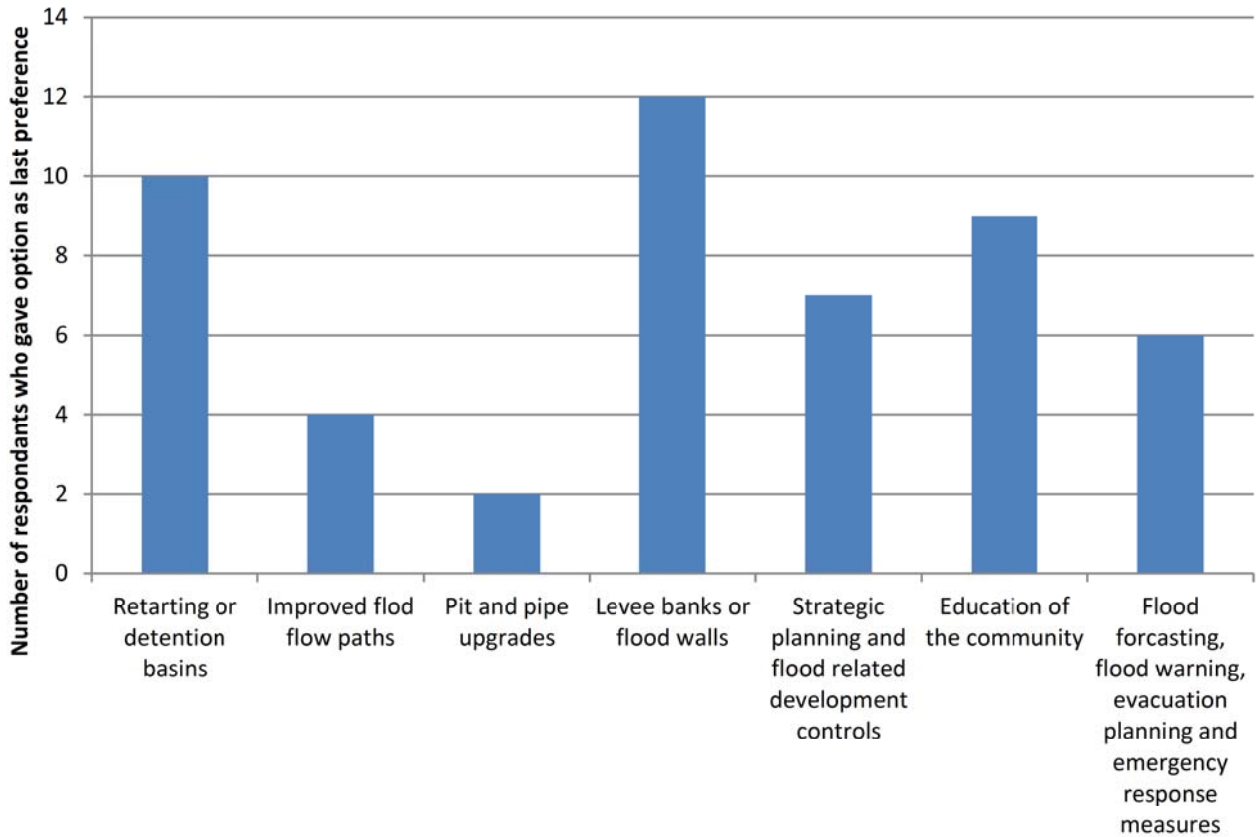
C: Property Type



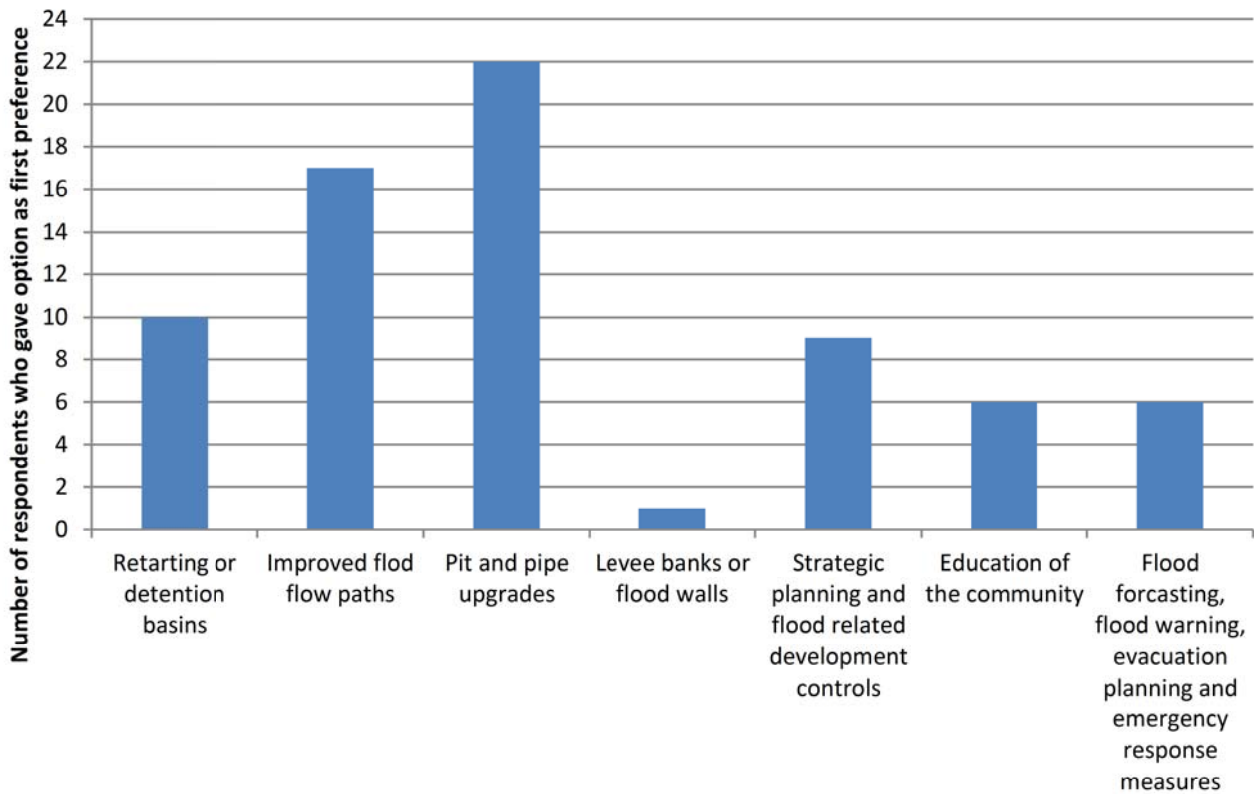
D: Period of Living/Working/Owning Property



E: Least Preferred Option



F: Most Preferred Option



G: Location of Flooding Experience

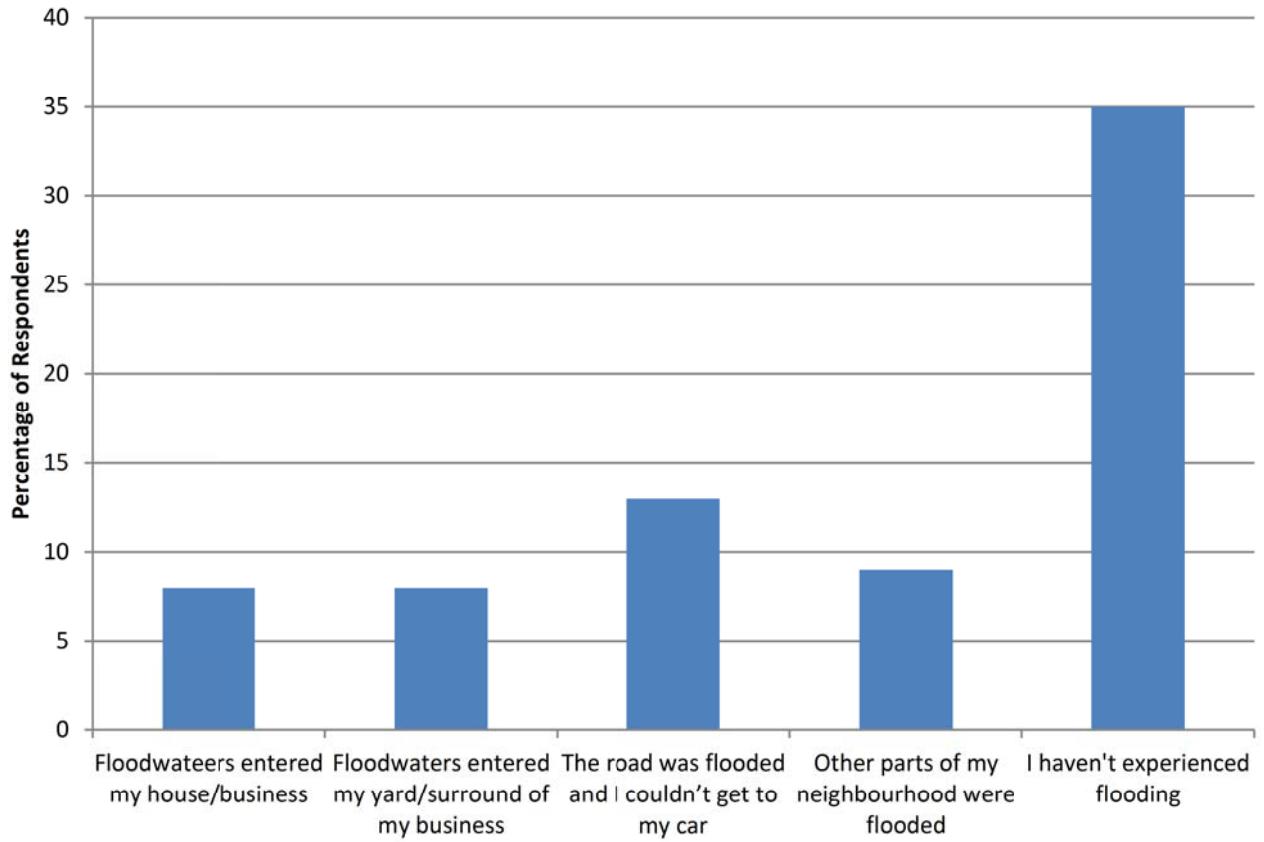
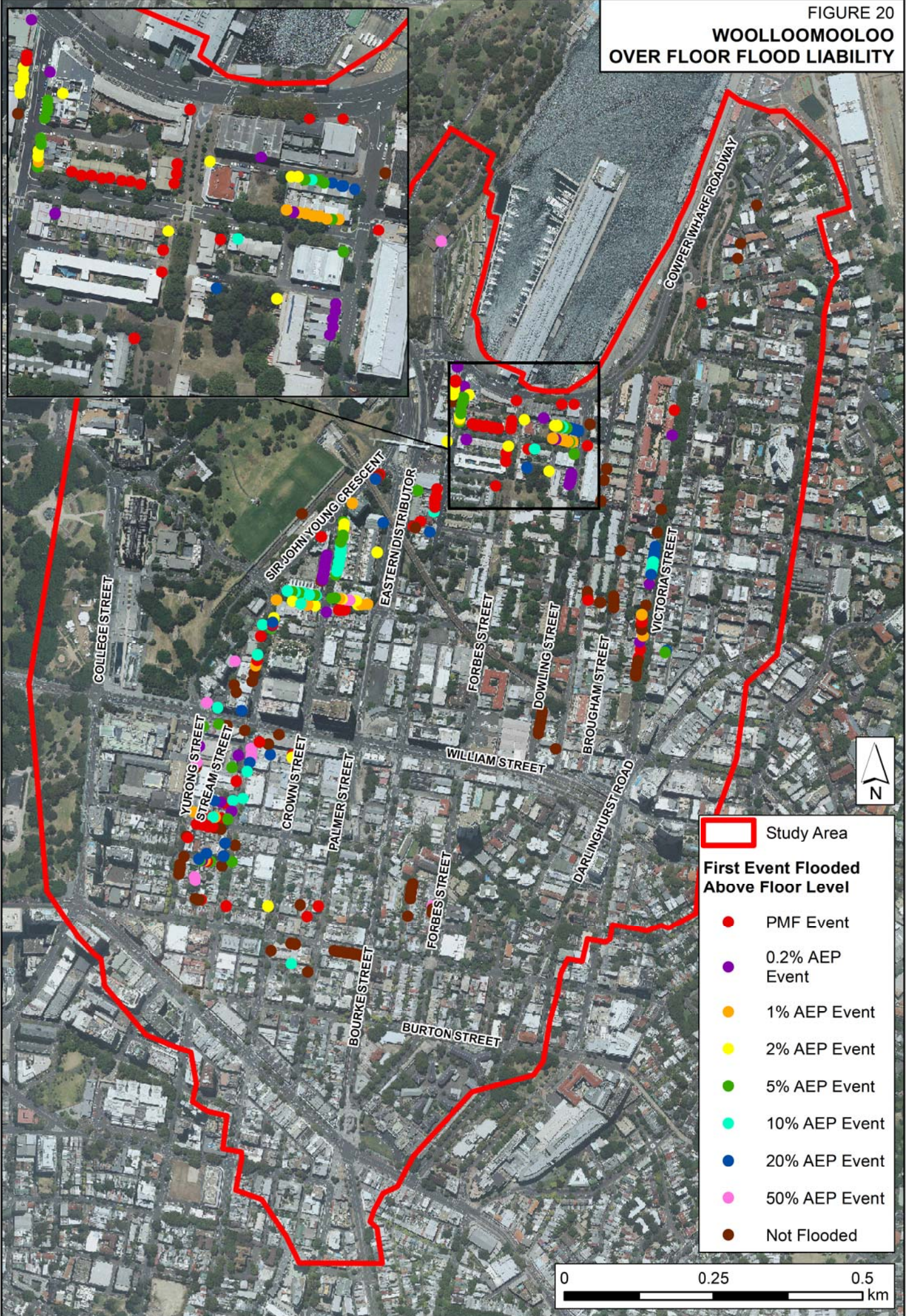


FIGURE 20
**WOOLLOOMOOLOO
OVER FLOOR FLOOD LIABILITY**



Study Area

First Event Flooded Above Floor Level

- PMF Event
- 0.2% AEP Event
- 1% AEP Event
- 2% AEP Event
- 5% AEP Event
- 10% AEP Event
- 20% AEP Event
- 50% AEP Event
- Not Flooded

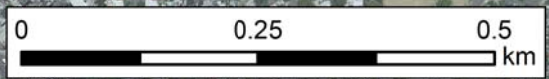
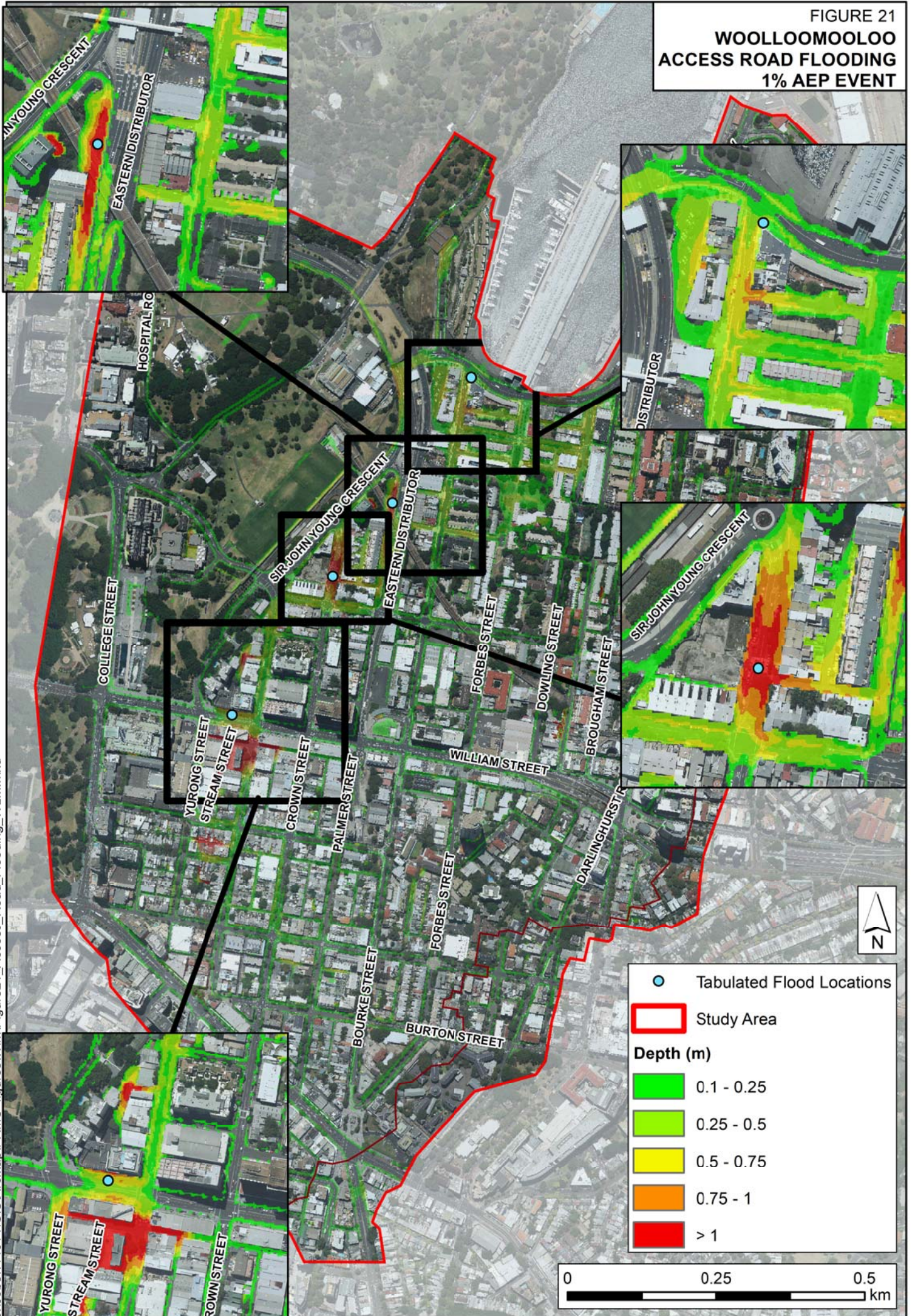
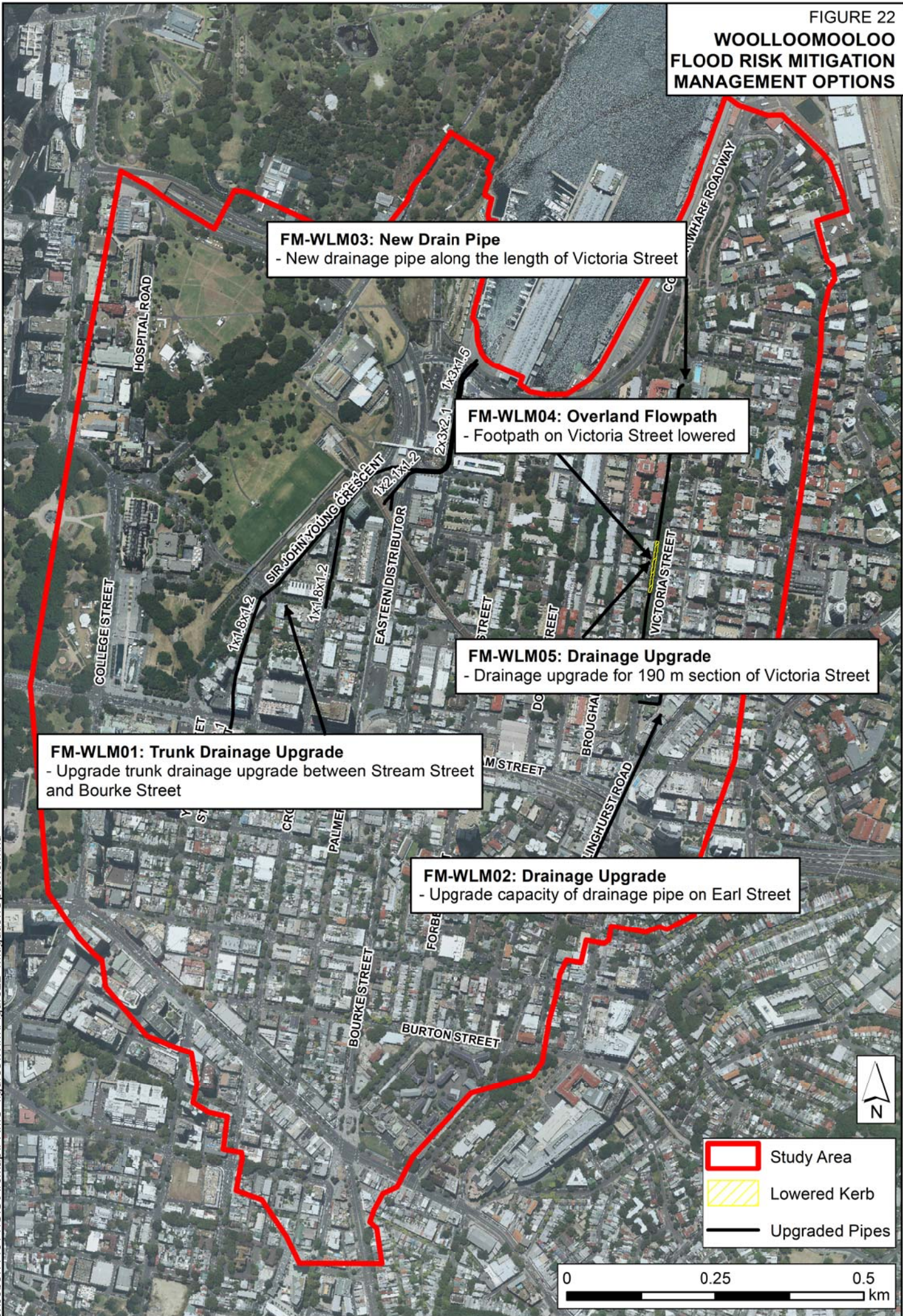


FIGURE 21
**WOOLLOOMOOLOO
 ACCESS ROAD FLOODING
 1% AEP EVENT**



J:\Jobs\114014\GIS\ArcMap\FRMS_figures\Wlm\Figure21_Access_Road_Flooding_WLM.mxd

FIGURE 22
**WOOLLOOMOOLOO
 FLOOD RISK MITIGATION
 MANAGEMENT OPTIONS**



FM-WLM03: New Drain Pipe
 - New drainage pipe along the length of Victoria Street

FM-WLM04: Overland Flowpath
 - Footpath on Victoria Street lowered

FM-WLM05: Drainage Upgrade
 - Drainage upgrade for 190 m section of Victoria Street

FM-WLM01: Trunk Drainage Upgrade
 - Upgrade trunk drainage upgrade between Stream Street and Bourke Street

FM-WLM02: Drainage Upgrade
 - Upgrade capacity of drainage pipe on Earl Street

- Study Area
- Lowered Kerb
- Upgraded Pipes

0 0.25 0.5
 km

FIGURE 23
WESTERN TRUNK HOTSPOTS
1% AEP EVENT



	Ground Contour (1.0m interval)
	Hotspots
	Existing Pipes
Depth (m)	
	0.1 - 0.3
	0.3 - 0.5
	0.5 - 1.0
	>1.0



FIGURE 25
 OPTION FM - WLM01
 10% AEP EVENT HAZARD IMPACT



Upgraded Pipes

First Event Flooded Above Floor Level

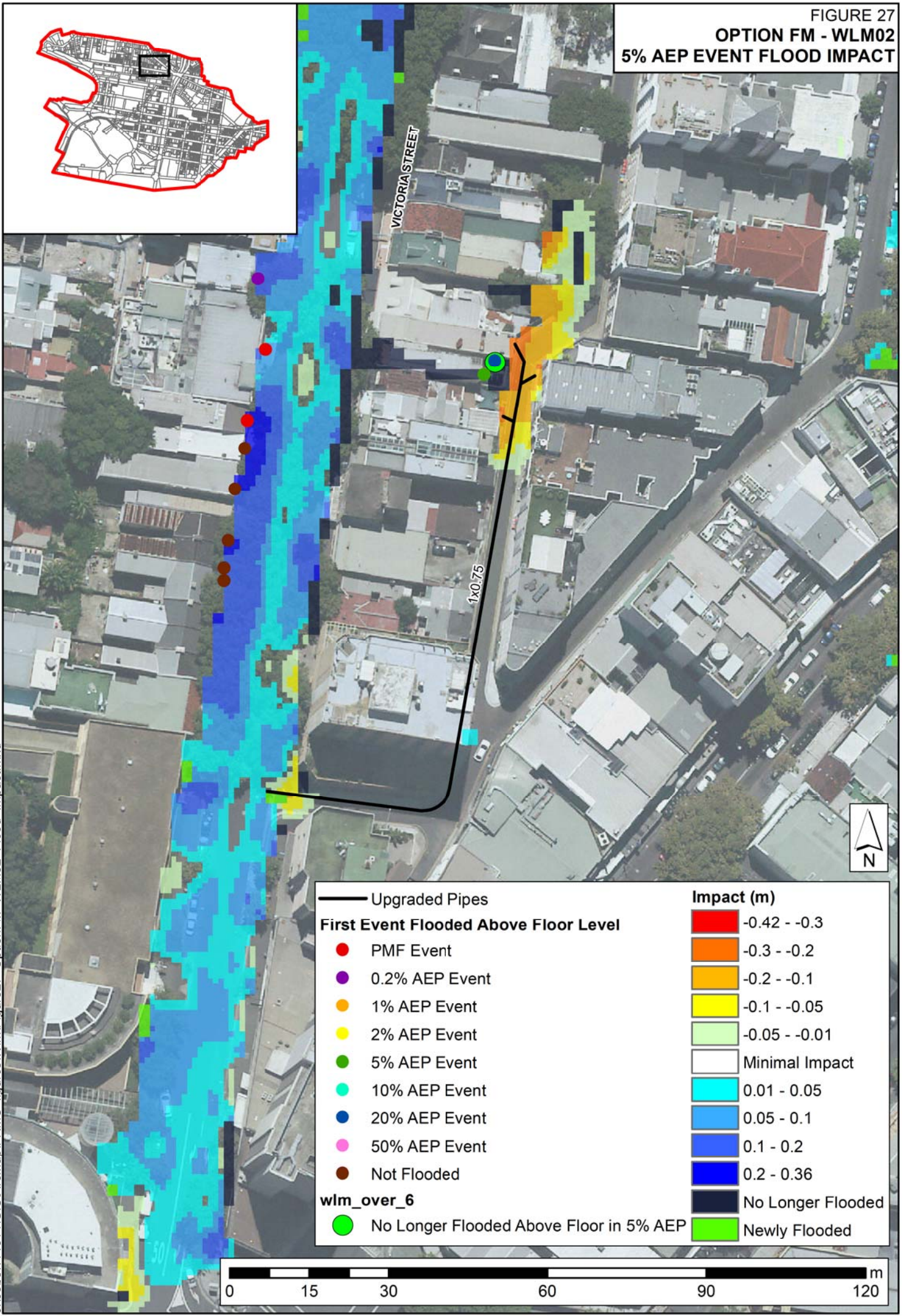
- PMF Event
- 0.2% AEP Event
- 1% AEP Event
- 2% AEP Event
- 5% AEP Event
- 10% AEP Event
- 20% AEP Event
- 50% AEP Event
- Not Flooded
- Newly High Hazard (Prev. Low Hazard)
- Low Hazard (Unchanged)
- High Hazard (Unchanged)
- Newly Low Hazard (Prev. High Hazard)



FIGURE 26
EARL STREET HOTSPOT
1% AEP EVENT



FIGURE 27
OPTION FM - WLM02
5% AEP EVENT FLOOD IMPACT



	Upgraded Pipes		-0.42 - -0.3
	PMF Event		-0.3 - -0.2
	0.2% AEP Event		-0.2 - -0.1
	1% AEP Event		-0.1 - -0.05
	2% AEP Event		-0.05 - -0.01
	5% AEP Event		Minimal Impact
	10% AEP Event		0.01 - 0.05
	20% AEP Event		0.05 - 0.1
	50% AEP Event		0.1 - 0.2
	Not Flooded		0.2 - 0.36
	No Longer Flooded Above Floor in 5% AEP		No Longer Flooded
	Newly Flooded		Newly Flooded

J:\Jobs\114014\GIS\ArcMap\FRMS_figures\Wlm\Figure27_OptionFM_WLM02_Flood_Impact.mxd

0 15 30 60 90 120 m